

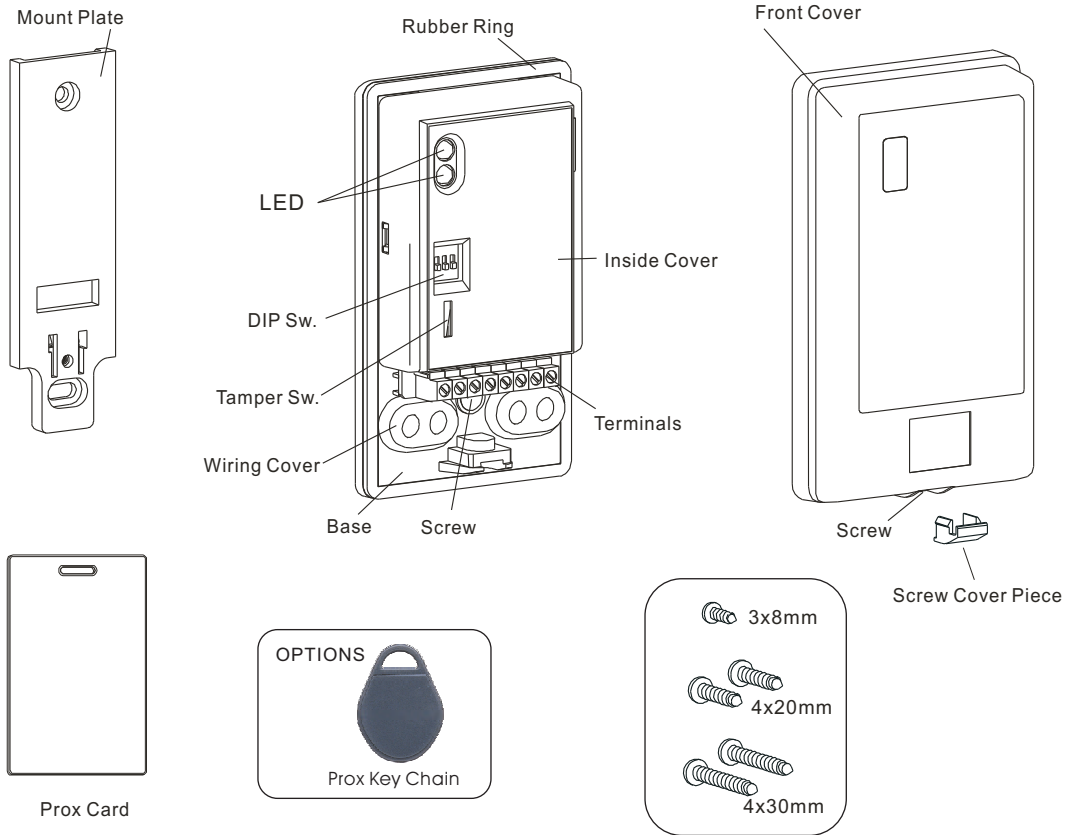
TS-50 PROX READER

Thank you for selecting the Prox Reader of SENGATE Brand. Please read the Manual Instruction carefully before using it.

Characteristics for products

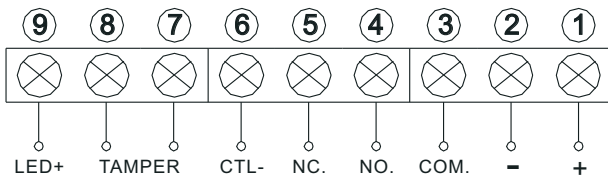
- This product is for outdoor use.
- With reliable waterproof function.
- Read style, the inductance distance is 8 cm.
- Prox key-chain and thin type prox card (0.8 mm thickness) are available for options.

1. PARTS DESCRIPTION



2. WIRING INSTRUCTION

TS-50 Terminals



NOTE:

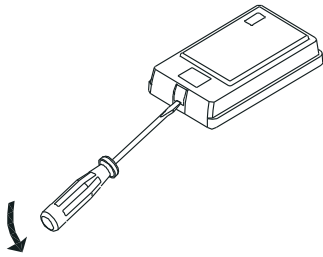
1. Terminal 9 is for Input DC10V-18V operation. Red LED would be on, when DC 10V-18 input.
2. In order to protect the product life, please follow the wiring instruction of Dry Connect Relay carefully.

T-50 Terminals:

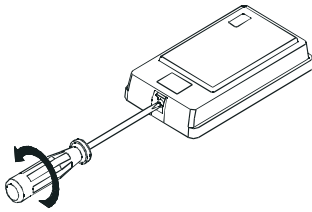
1. Terminal 1- Power Input ⊕ DC10V-18V
2. Terminal 2- Power Input ⊖ DC 10V-18V
3. Terminal 3- Dry Connect Relay Output COM.
4. Terminal 4- Dry Connect Relay Output NO.
5. Terminal 5- Dry Connect Relay Output NC.
6. Terminal 6 Exit switch Input
7. Terminal 7 Tamper Switch Output COM.
8. Terminal 8 Tamper Switch Output NC.
9. Terminal 9- Terminal for LED Input ⊕ DC10V-18V

3. INSTALLATION PROCEDURE

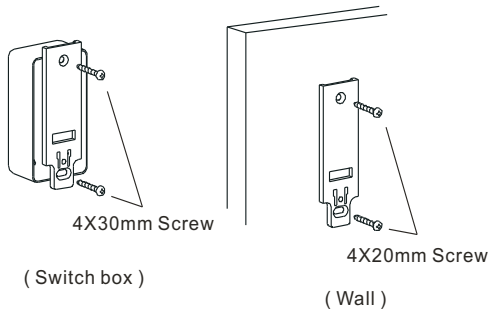
3-1: Open the " screw cover piece " of the front cover (bottom side).



3-2: Screw-loose and open the front cover.



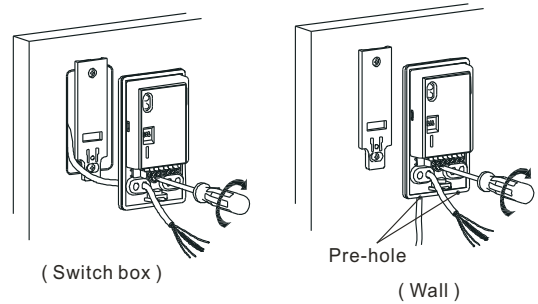
3-3: Fix the mount plate in the switch box or on the wall.



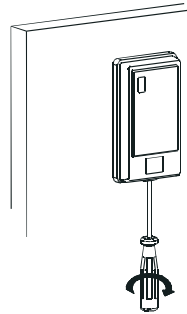
3-4: Pull the wiring through the " wiring cover piece " and keep a certain long wiring for further using.

3-5: Put the base of TS-50 on the mount plate.

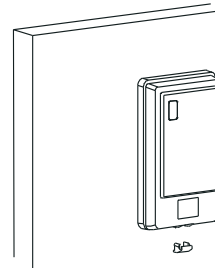
3-6: Terminals wiring procedure.



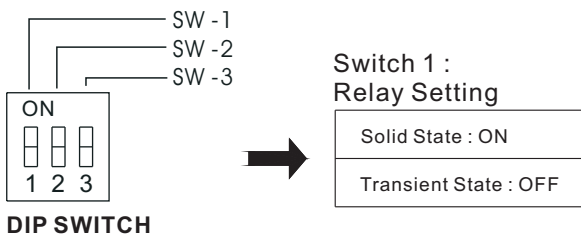
3-7: Put the front cover piece back.



3-8: Fix the " screw cover piece " back to the front cover.



4. DIP SWITCH DESCRIPTION



SW -2,3 : Relay Transient Interval

Setting Time	SW -2	SW -3
1 Sec	OFF	OFF
5 Sec	OFF	ON
15 Sec	ON	OFF
40 Sec	ON	ON

NOTE :

1. If the Relay was set under Solid State (Switch 1 with ON condition), then any readings on Switch 2,3,4 is not valid.
2. When resetting the power, the Relay should be under "OFF"

(1) How to Memorize Master Card (Mother Card).

- 1 The IC in the TS-50 is empty of memory, both Master Card and Sub-card is virgin.
- 2 When TS-50 with POWER ON, the LED would go Multi-Color flashing.
- 3 Bring any card approach to TS-50, the Green LED will flashing quickly for 3 seconds then stop to illuminate, that card would be treated as Master Card.

NOTE :

1. The Master Card of TS-50 has been marked when ex-work.
2. Only one Master Card for one TS-50 is allowed.

(2) How to Delete/ Change the Master Card :

- 1 Once the Master Card is memorized, which can't be deleted/ changed anymore.
- 2 If Master Card need to change, it should change the IC memory with a new one.
- 3 If the IC memory need to change, please contact your supplier for further information.

(3) How to Memorize the Sub-Card :

- 1 Bring the master card approach to the TS-50, the LED will go flashing Green for 3 seconds, and then turn with flashing Yellow quickly. Move the master card away, the flashing Yellow LED will go slowly.
- 2 Bring the sub-card approach to the TS-50.
- 3 When Green LED stop to illuminate, that means sub-card has been memorized. Move the sub-card away, the LED will go flashing Yellow slowly.
- 4 Repeat the step/ 3-2 and 3-3, then go to memorize the next sub-card.
- 5 To end the sub-card memorization, take the master card approach to TS-50 again, or doing nothing for 15 seconds. The flashing green LED will stop to illuminate.

NOTE :

1. 2 sub-cards of TS-50 which have been marked when ex-work.
2. The quantity of memorized sub-cards for TS-50 is 50 cards.

(4) How to Delete the Sub-Card :

- 1 Bring the Master Card to TS-50, LED will go flashing Green for 3 seconds, after that, LED will turn with flashing Yellow quickly for 10 seconds, then go with Red and stop to illuminate. Sub-card has been deleted.
- 2 Move the master card away, the Green LED will stop to illuminate.

NOTE :

1. Once Sub-Card memorization be deleted, that means all the Sub-Cards has been deleted.

(5) How to use Sub-Card :

- 1 Put the Sub-Card within 8 cm in front of TS-50.
- 2 Interval time of using the Sub-Card is 1 second at least. It has to leave 1 second time to use another Sub-Card.

NOTE :

- TS-501. When sub-card (without memorized) approaches to TS-50, the LED will go flashing Red quickly for seconds (as an identification), then turn with Green and stop to illuminate.

(6) How to identify the Master Card :

- 1 The master card has been marked the moment ex-work.
- 2 Once the master card approach to TS-50, the Green LED will flash rapidly for several seconds.
- 3 If all the cards can't make LED go flashing Green, probably the prox reader out of order or the master card got lost.

6. TROUBLE SHOOTING GUIDE

CONDITION	POSSIBLE CAUSE	REMEDY
LED not lighting	1. No power supply. 2. Bad wiring installation.	1. Turn on the power. 2. Check the wiring.
Sub-card fail to memorize.	1. Sub-card memo-capacity is full. 2. Sub-card is broken.	1. Delete and re-memo the sub-cards with 30 cards max. 2. Change with new one.
Sub-card doesn't work	1. Sub-card is broken. 2. Sub-card hasn't been memorized.	1. Change with new one and re-memo it. 2. Memo the sub-card.
Master card doesn't work	1. The master card is broken. 2. Used wrong master card.	1. Contact your supplier to take care. 2. Change the right master card.
1. Prox Reader doesn't work. 2. The inductance distance too short. 3. Prox Reader with wrong Activated Type/ Interval Time.	1. Wrong wiring. 2. The reader interfered by other magnetic attraction material. 3. Set DIP switch in wrong.	1. Check the wiring situation. 2. Move the installation to right place. 3. Set the DIP switch with right instruction.

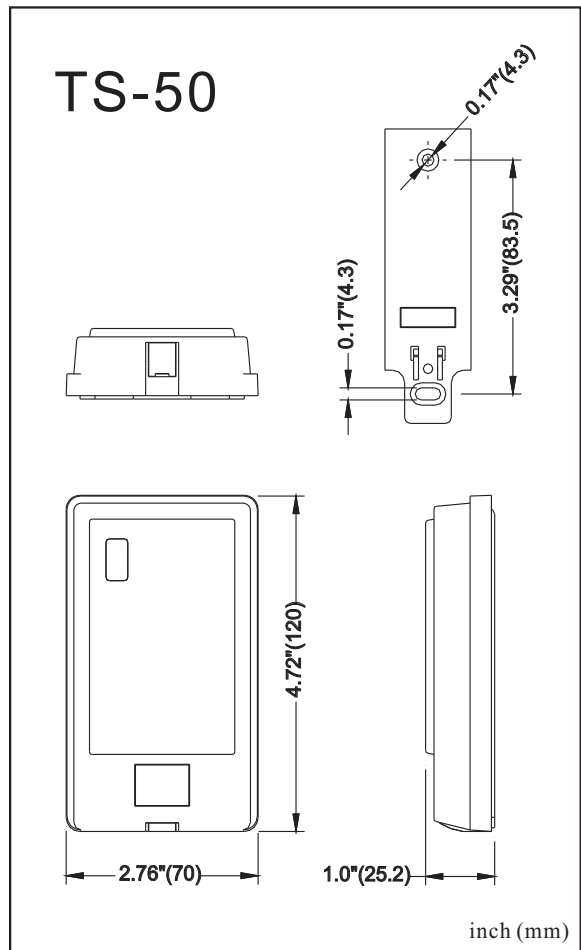
7. SPECIFICATION

Code Number	TS - 50
Supply Voltage	10V ~ 18VDC
Current Consumption	50mA (max. 68mA)
Reading Distance	3.15" (8cm)
Frequency	125KHZ
Card Used	Read Only
Reading Speed	0.1 sec
Card Capacity	Master Card x 1 pc Sub Card x 50 pcs
Relay Output	Dry Connect Relay NC. / NO. 0.2A/ 30 VDC Transient (DIP Switch setting) / Solid State
Tamper Switch Output	Dry Connect Relay NC. 0.2A/ 30VDC (N.C. opens when cover is removed.)
LED	Multi-Color (Red/ Green) ON : Power/Function operation. Red Color ON : DC 10V-18V connected.
Operating Temperature	-13°F to +131°F (-25°C to +55°C)
Environment Humidity	95% (max)
Wiring	Terminals
Mounting Position	Indoor/ Outdoor (Wall, Switch Box)
Weight	6.6 oz (187 grams)
Dimensions (inches/ mm)	2.76 " x 4.72 " x 0.1 " (70 x 120 x 25.2)
Standard Accessories	1.8 mm thickness Prox Card --- 3 pcs Screws (4 x 20 mm) --- 2 pcs Screws (4 x 30 mm) --- 2 pcs Screws (3 x 8 mm) --- 1 pc
Parts for Options	0.8 mm thickness Prox Card Key-chain Prox Card

NOTE :

- If two (2) Proxpro readers is required, then 30 cm distance min. is required to avoid the possible interference.
- If the installation is near by magnetic attraction material (ex. Iron) would short the inductance distance.
- Please follow the Manual Instruction carefully to prevent damaging the product.

8. DIMENSIONS



No:A019B01-00



Taiwan Security Net Co., Ltd.

Designing / Manufacturing

No. 4-46 Feng Jen Rd, Kao Tarn Village,
Jen Wu Hsiang, Kaohsiung Hsian, Taiwan, R.O.C.
Tel : 886-7-3721111-3 Fax : 886-7-3721114

Web Site : <http://www.sengate.com>
E-Mail : service@sengate.com